

SPECTRUM TEST REPORT

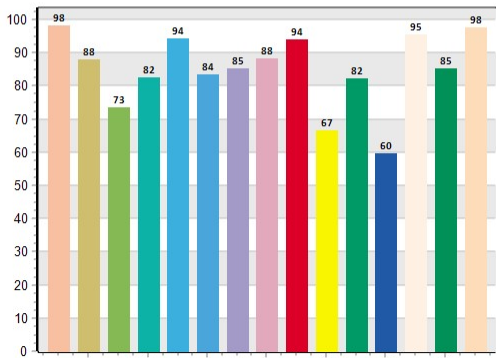
Information

User : GW	Measure Time :15:06:35
Model NO. : MK350N PREMIUM	Light Source :FUSION XPAR 12Z
Memo : COLOUR TEMPERATURE:5600K CTC DMX CHANNEL: 57.4 % ZOOM: 50%, DIMMER: 100%, DISTANCE (LENS TO SENSOR): 3M	

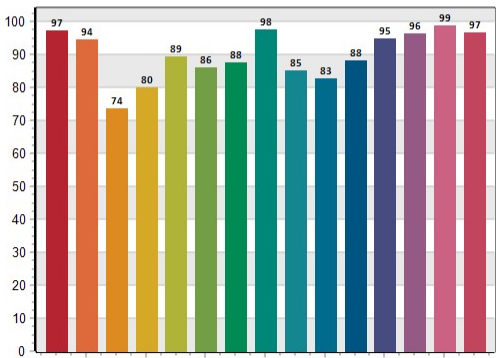
BASIC

LUX	: 1553 lx
CCT	: 5613 K
Duv	: 0.0018
TLCI	: 82.0
CRI	: 86.7

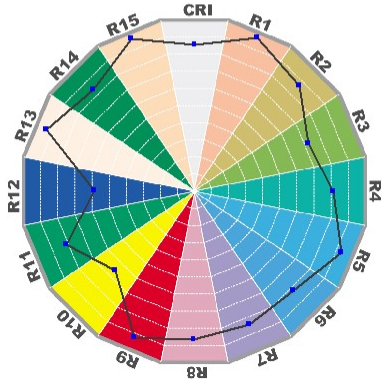
CRI: 86.70



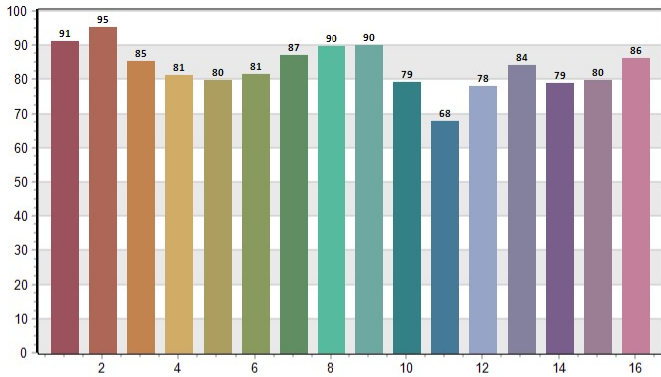
CQS: 87.57



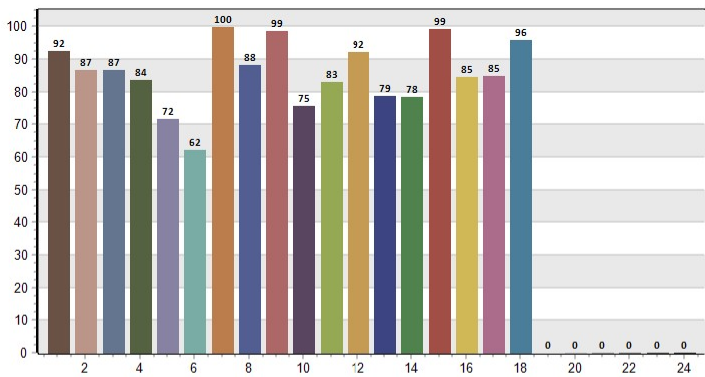
CRI-2



TM30: 85.04



TLCI: 81.95



CRI values, only R1-R8 are used to calculate final CRI

R1	R2	R3	R4	R5	R6	R7	R8	R9	R10	R11	R12	R13	R14	R15
98.2	88.0	73.5	82.4	94.4	83.5	85.3	88.2	94.0	66.6	82.3	59.6	95.4	85.3	97.6

TM30 C values, 16 binned values out of total of 99 C values

C1	C2	C3	C4	C5	C6	C7	C8	C9	C10	C11	C12	C13	C14	C15	C16
91.2	95.3	85.3	81.3	79.9	81.4	87.1	89.6	90.0	79.3	67.9	78.1	84.1	78.9	79.8	86.1

CQS Q values

Q1	Q2	Q3	Q4	Q5	Q6	Q7	Q8	Q9	Q10	Q11	Q12	Q13	Q14	Q15
97.2	94.5	73.7	80.0	89.4	85.9	87.5	97.6	85.2	82.6	88.2	94.7	96.3	98.8	96.7

Company: GLP

Address:

Postcode/town:

test location:

Date :2023/05/09

phone number