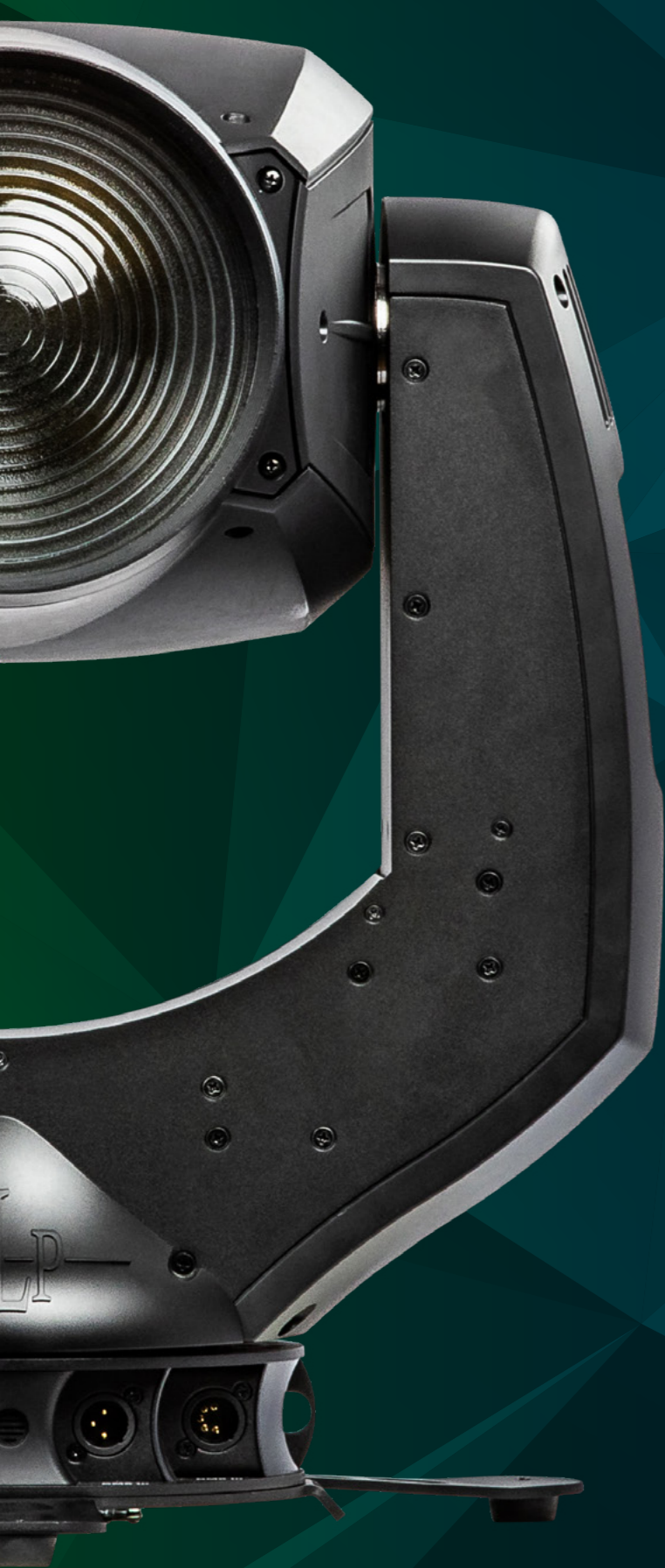


# impression<sup>®</sup>

S350 WASH

PERFECT WHITE  
PREMIUM COLORS  
UNLIMITED CREATIVITY





**350 WATT LED**  
Lifetime 20,000 h  
Luminous Flux 10,300 lm



**PREMIUM COLORS**  
CMY Color Wheel  
New CTC-Technology



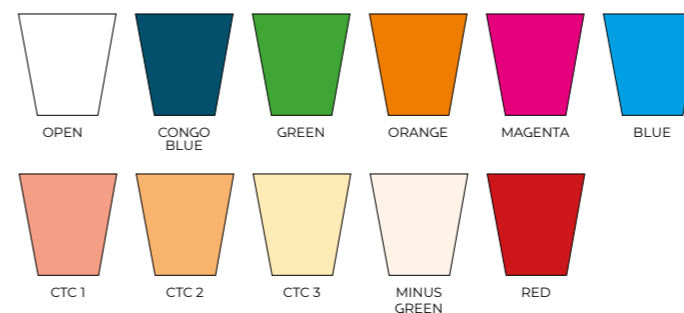
**UNLIMITED CREATIVITY**  
4 Blade Framing System  
Iris fully variable



**SLEEK DESIGN**  
25.5 kg / 56 lbs  
Baseless  
Intuitive Controls

## COLORS

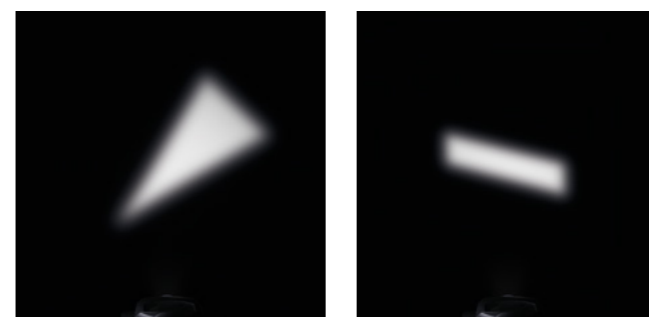
### FIXED COLOR WHEEL



### CMY COLOR MIXING



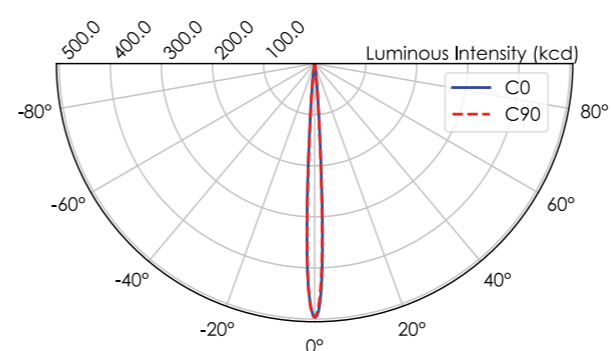
## FRAMING



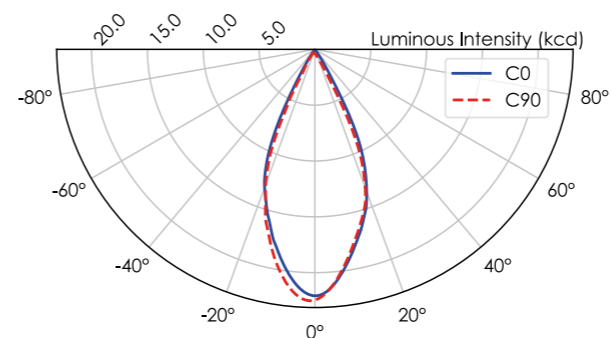
The four shutter blades of the impression S350 Wash can be inserted over the full beam at an angle of  $\pm 30^\circ$  and in the position of 0–100%. Thus, triangles and a complete shading is easily realized. The entire framing module is on the same optical level. The entire shutter unit can also be rotated by  $\pm 45^\circ$ .

## PHOTOMETRIC DATA

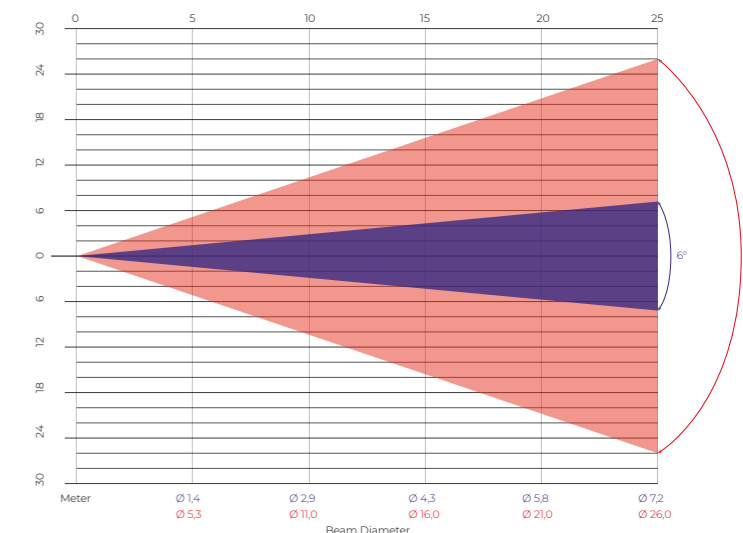
### NARROW BEAM



### WIDE BEAM



### BEAM ANGLE





# IMPRESSION S350 WASH – TECHNICAL DATA

## LIGHT SOURCE

Type	White light LED-Engine
Power	350 W
Lifetime	20,000 K
LED refresh rate	2,200 Hz, 3,000 Hz, 4,800 Hz, 9,600 Hz, 25 kHz
CCT	6,000 K
CRI (Ra)	90+
CQS	90+
TLCI	90+
TM-30 Rf	85+
TM-30 Rg	95+

## OPTICS

Total Output	up to 10,300 lm
min. Zoom	6° half peak (50%) 12° field angle (10%) 17° cutoff angle (3%)
max. Zoom	45° half peak (50%) 60° field angle (10%) 65° cutoff angle (3%)
Focus	2m / 6.6 ft – infinity, motorized

## EFFECTS

Color mixing	fully variable CMY
Color temperature control	variable 2,500 – 8,000 K
Color wheel	10 dichroic filters + open, split color, indexing, continuous rotation
Framing	4 individual framing shutters with +/- 30° pitch control each, each blade covers 100% of the beam, additional gate rotation of 90°

Iris	variable 0–100%
Dimmer / Shutter	0–100% continuous electronic dimming, regular random strobe and pulse effects, instant open and blackout
Pan	565°
Tilt	256°

## CONTROL

DMX channels	27
Control Modes	1
Control Protocols	DMX (USITT DMX512-A), RDM (ANSI/ESTA E1.20), optional: CRMX (Lumenradio), Art-Net, sACN
Dimming Curves	linear, soft
Fan Modes	regulated, high, medium, low
Focus Tracking	off, near, medium, far
Display	control panel with backlit graphic display, Jog Dial Navigation, DMX, RDM

## CONNECTORS

Power connection	Neutrik powerCON TRUE1 In
Signal connection	XLR 5-Pin, XLR 3-Pin, Neutrik etherCON In

## OPERATING CONDITIONS

Power input	100–240 V AC nominal, 50–60 Hz
Fuse	T15A 250V 6x32 mm

## THERMAL SPECIFICATIONS

Cooling Type	combined convection and forced air
max. ambient temperature (Ta max.)	45°C / 115°F
min. ambient temperature (Ta max.)	5°C / 40°F

## INSTALLATION

Mounting	M10 Screw Thread, 2 pair of 1/4-turn locks, safety cable attachment point
Orientation	any
min. distance to illuminated surfaces	2 m / 6.6 ft

## CONSTRUCTION

Housing color	black / custom on request
Protection Rating	IP20
Construction Features	baseless design, Tilt-Lock-System, modular slide in system, service friendly filter system and light source change

## DIMENSIONS & WEIGHT

Height (head straight up)	642 mm / 25.3 in
Width (across yoke)	471 mm / 18.5 in
Width (across head)	474 mm / 18.8 in
Depth (head straight up)	650 mm / 25.6 in
Weight	25.5 kg / 56 lbs

